



Venue Brochure

mt's

About the venue.

Inspired by the classic New York loft style, NT's Loft is a stunning cocktail bar and rooftop hideaway with large windows, exposed brickworks and a heated rooftop overlooking the London skyline.

Featuring an impressive dance floor, a state-of-the-art sound system, bespoke ambient lighting designs, and a retractable roof installed over a private rooftop, the space is flooded with natural light, ensuring a spectacular setting for receptions, product launches, corporate parties, wedding receptions as well as photoshoots.

Located in the heart of London Fields, near Bethnal Green Tube Station and Hackney Central train station, NT's can accommodate up to 350 guests and is a versatile space that can be easily transformed to fit any event.

Available for private hire every day, the venue also offers a range of customisable services to make your event unforgettable.





Venue Highlights.

Expertise in Event Planning

Our dedicated event team will assist you throughout the entire process, offering guidance on production, layout, entertainment options, and F&B packages. Each event is customised with care. If you have any specific requests or budget constraints, just let us know!

Branding Opportunities

Various branding options are available at the venue, including window & floor vinyls, bar branding, DJ booth branding and step and repeat. A branding deck is available upon request.

Comprehensive Technical Package

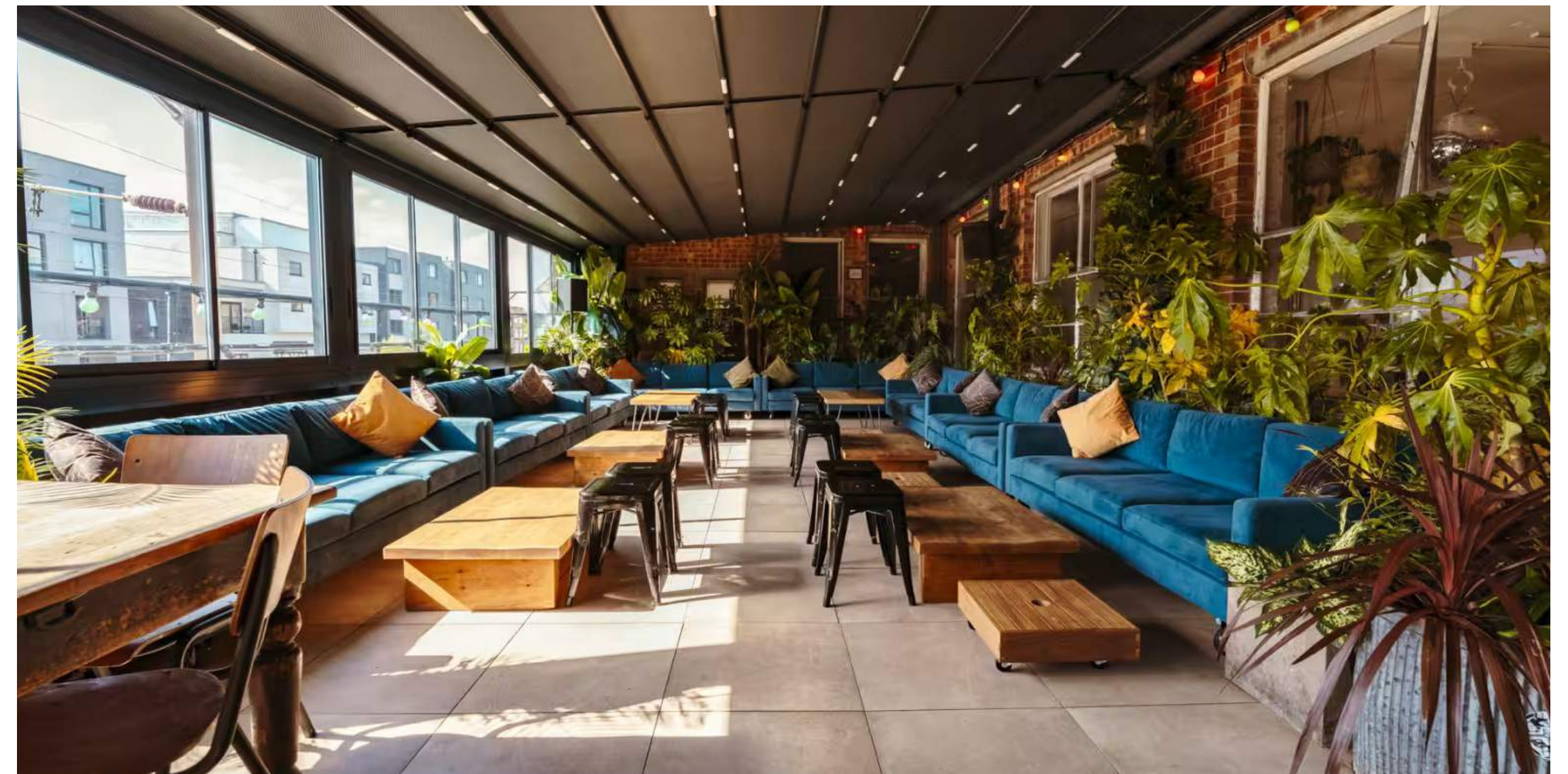
The venue is equipped with a brand new Funktion One sound system and Pioneer DJ kit. The venue also has a stage space, ideal for DJ sets and live music or entertainment.

All-Weather Rooftop

Our rooftop features a retractable clear roof, ensuring events can be enjoyed year-round, regardless of the weather.

Heating and AC

Both the rooftop and loft are fully heated, with the loft also having air conditioning for optimal comfort.



Venue Highlights.

In-House Kitchen

Our in house kitchen has full amenities and equipment to provide a number of catering options.

High-Speed WiFi

Guests can enjoy high-speed WiFi access throughout the venue.

Venue Styling

The venue showcases a selection of high-quality Chesterfield sofas, retro seating, vintage tables, and bespoke lighting design, adding a special touch to your event.

Flexible Furniture

All our furniture can be removed, making it easy for clients to bring in large production.

Additional Spaces

The venue hire fee includes the use of a small office space with a desk, chair, sofa and wifi. If you're in need of a larger space to use as a greenroom or large production office, just let us know!

Make it your own!

We offer a range of additional features and bespoke services to enhance your experience. Let us know your ideas, and we will work with you to bring them to life.



Food & Drinks.

Featuring a large bar offering seasonal cocktails, a wide selection of draught beer and an extensive wine list, our bar team can offer a fully customisable menu for your event. Drink packages include:

STANDARD DRINK PACKAGE I Up to 4 hours
House Beer, House Wine, Single Spirit & Mixer and Soft Drinks

PREMIUM DRINK PACKAGE | Up to 4 hours
Cocktail or Prosecco on arrival, House Beer, House Wine, Single Spirit & Mixer and Soft Drinks

ULTIMATE DRINK PACKAGE | Up to 5 hours
Unlimited Cocktails, Prosecco, House Beer, House Wine, Single Spirit & Mixer and Soft Drinks

Package extensions available upon request.

Our standard selection of cocktails include:

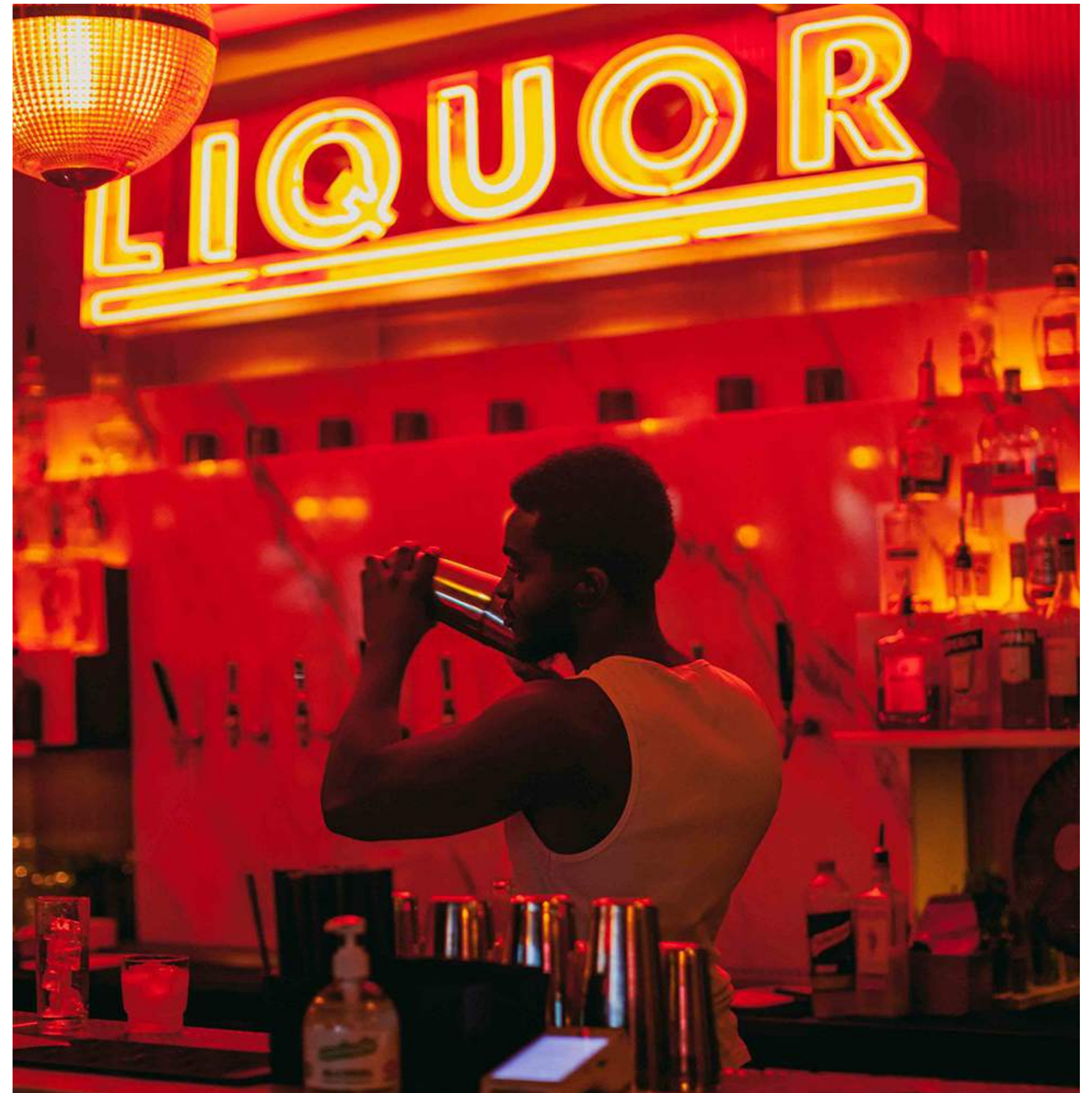
NT'S G&T: *Beefeater Gin, Italicus, Fevertree Mediterranean Tonic Soda*
Chili Margarita: *Navy Rum, Mezcal, Lime, Cointreau, Orgeat Foam*
Our Tai: *El Jimador Tequila, Lime, Cointreau, Homemade Chilli Syrup*
Loft Rum Punch: *White & Dark Rum, Lime, Pineapple, Lychee, Mango*
Paloma: *Tequila Reposado, Lime, Two keys Pink Grapefruit Soda*

Our in-house caterer, [Voodoo Rays](#), is perfect for any type of events. We also proudly collaborate with London's most exciting caterers, including [Canababes](#), [Funthyme](#) and [Dinner Ladies](#)! From healthy bites to indulgent treats, buffet and banquet to 3 course meals, there's something for every taste!*

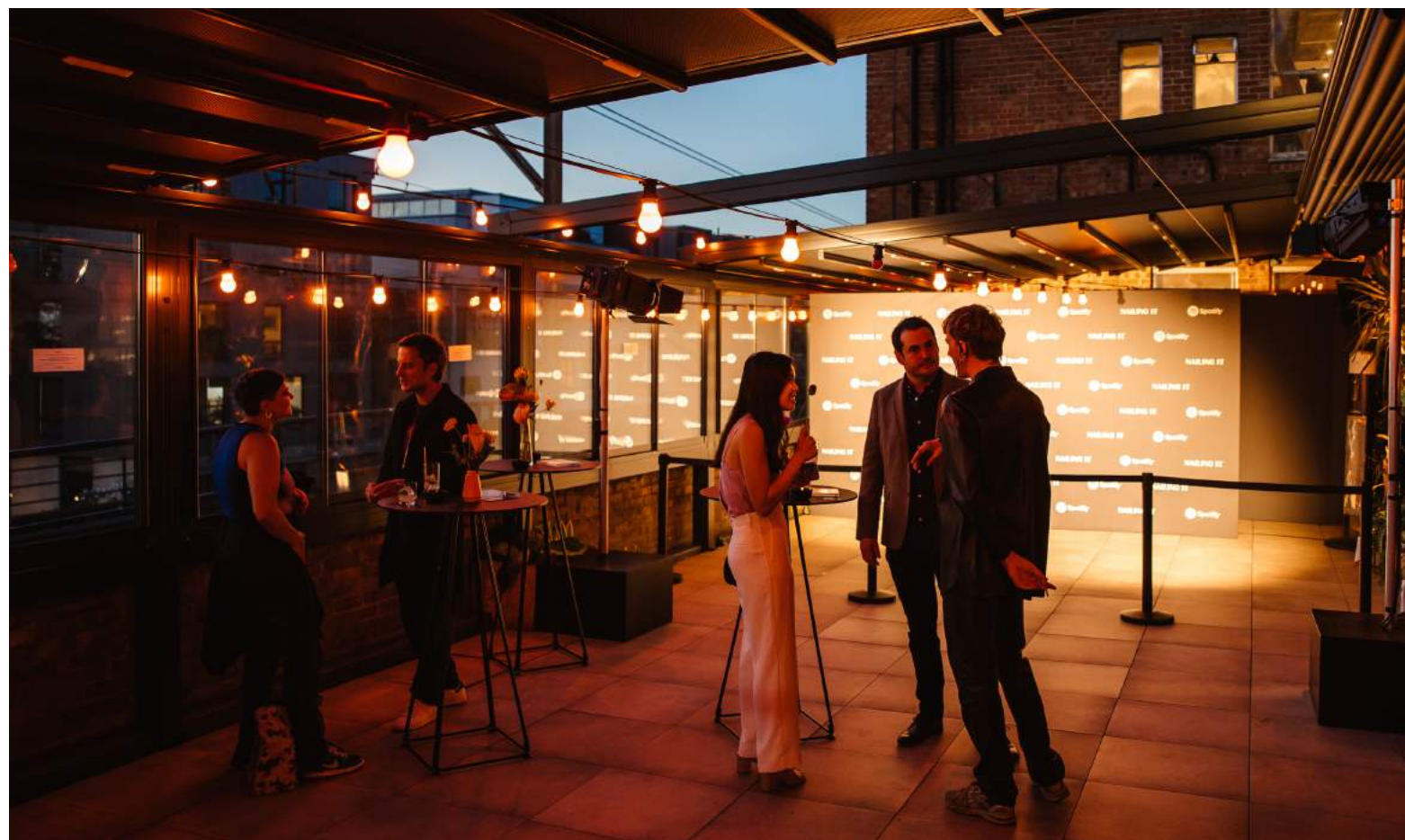
Catering menus are available upon request.

Kitchen specs can be found [here](#).

*External catering is subject to £500 buyout fee.



What we've done.



Tech Specs.

SPEAKERS | LOFT

2 x Funktion-One Resolution2U
2 x Funktion-One BR118
3 x Funktion-One F1281
2 x Funktion-One F81

SPEAKERS | TERRACE

4 x Funktion-One F101
1 x Funktion-One SB8

DJ KIT

2 x Pioneer CDJ3000
2 x Pioneer CDJ2000
2 x Technic SL-1210 Mk2
1 x Pioneer DJM900 NXS2

ZONING & LIMITING

Formula Sound ZMR243 & Remotes
Formula Sound AVC4 Limiter On 2 x DJ Positions

AMPLIFICATION & PROCESSING

FFA Matrix
FFA Non DSP Amplifiers
Terrace / Monitors run On Powersoft 4CH DSP Amplifiers

LIGHTING

5 x individual LED stage Par Cans
4 x rows of 3 x 2m pixel tubes with 40 x RGBNW pixel each
2 x custom blinders with 8 bulbs (controlled in a pair)

DJ BOOTH

248 cm x 93cm x 63cm

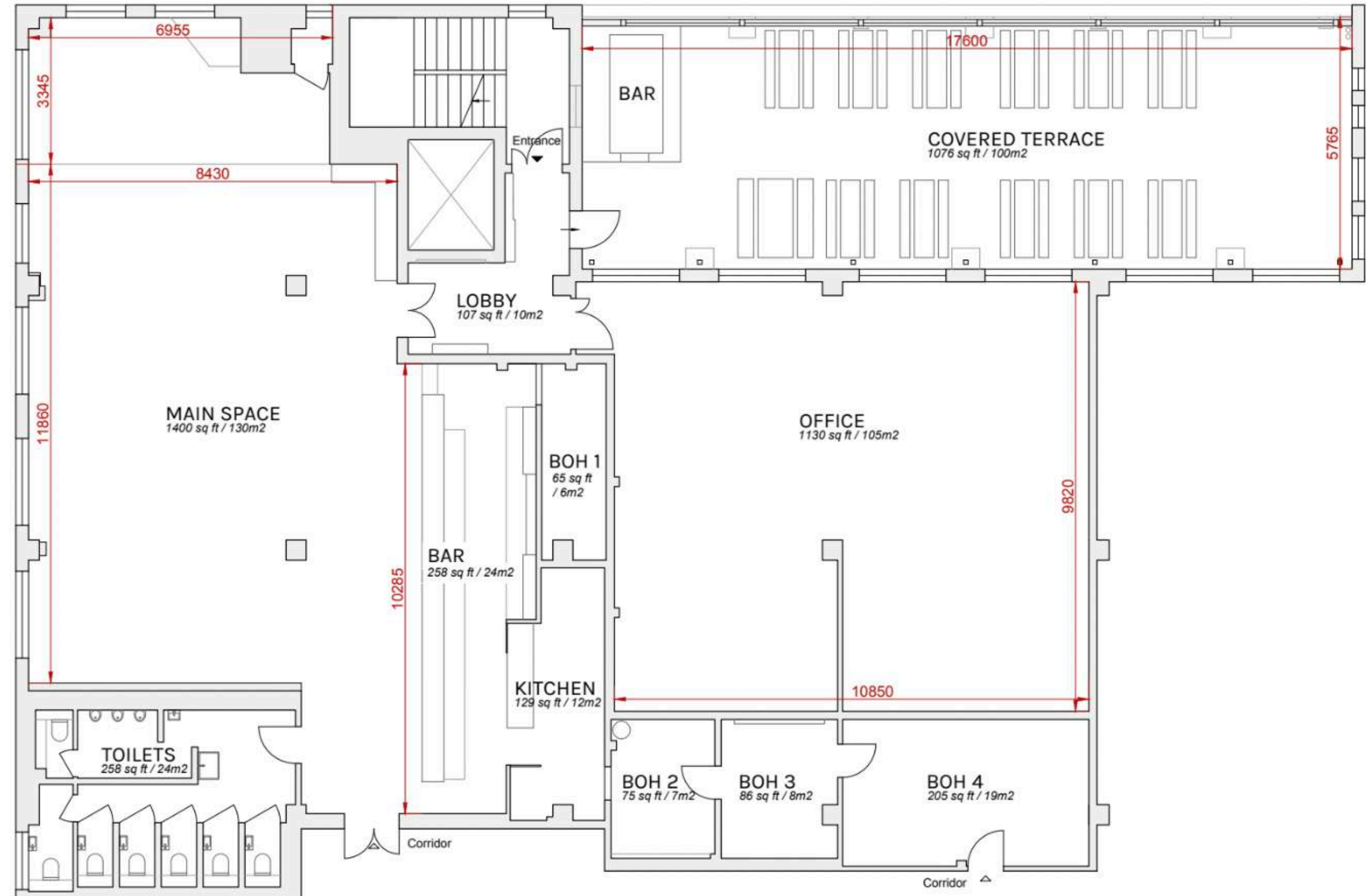
SCREENS

85" Sony 4K screen
Optima projector & 92" screen

POWER

Single phase power only. Power plan available [here](#).

Floor Plan.



FAQS.

LOCATION & ACCESS

207, 1 Westgate Street, London, E8 3RL.

NT'S LOFT is accessible via Netil Lane.
The venue is on the second floor, accessible with lift access via Netil House.

HIRE TIMES

Sunday - Thursday | 08:00 - 00:00
Friday - Saturday | 08:00 - 03:00

Extensions are available on request.

LICENSING

The venue has a premises licence which covers entertainment, sporting events, live & recorded music, provision and sale of alcohol and late night refreshments.

TRANSPORT

Overground | London Fields (6 mins walk), Bethnal Green (13 mins walk), Hackney Central (15 mins walk)
Tube | Bethnal Green (15 mins walk)
Bus | 26, 106, 254, 388, D6

Our taxi partner can arrange private transport for your event.

FLOOR PLANS

PDF floor plan can be downloaded [here](#).
DWG floor plan can be shared upon request.

CAPACITIES

Full Venue | Standing 350 | Seated 70 - 120 | Theatre 80
Loft | Standing 250 | Seated 70 - 120 | Theatre 80
Rooftop | Standing 120 | Seated 100

Capacities may vary subject to seating, production and activities.

VENUE FURNITURE

The venue hire fee includes a range of tables, rugs and seats. You can find the full inventory [here](#). Please note that the list of furniture available may change, please speak to your Event Manager for more details.

CLOAKROOM

Our cloakroom can accommodate up to 350 guests.

DAMAGE DEPOSIT

A minimum damage deposit of a minimum of £1,000 is required. The deposit will be returned, if no damage caused, within 14 days post event.

PAYMENT

All fees are payable in full prior to access on site. Upon confirmation, your Event Manager will confirm your payment plan, which is 50% of venue hire and a signed contract within one week, and the remaining 50% two months prior to the event. Once a signed contract is received, the client is liable for cancellation fees as stipulated in the venue hire agreement.

They were here.



SONY

DAZED



Get in touch.

events@ntloft.co.uk | 02081 564 674